

Session Name: 8-25-2016 2-45 PM

Date Created: 8/25/2016 1:18:27 PM

Active Participants: 58 of 58

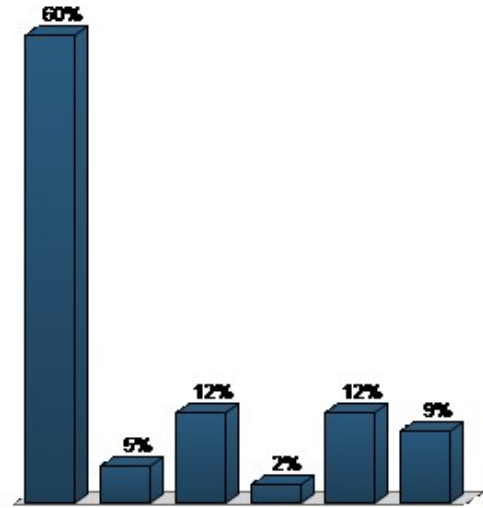
Average Score: 0.00%

Questions: 15

Results by Question

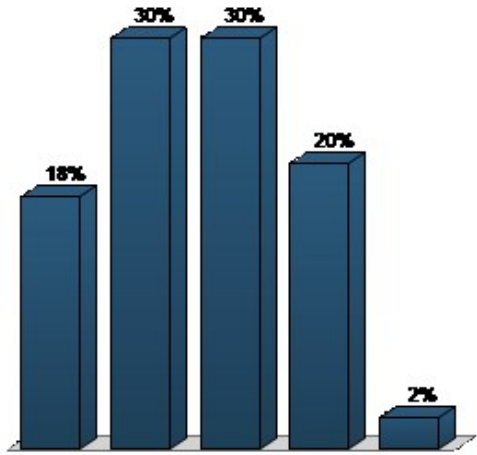
1. Which county do you live in? (Multiple Choice)

	Responses	
	Percent	Count
Pulaski	60.47%	26
Laclede	4.65%	2
Phelps	11.63%	5
Texas	2.33%	1
Other Missouri	11.63%	5
Out of State	9.3%	4
Totals	100%	43



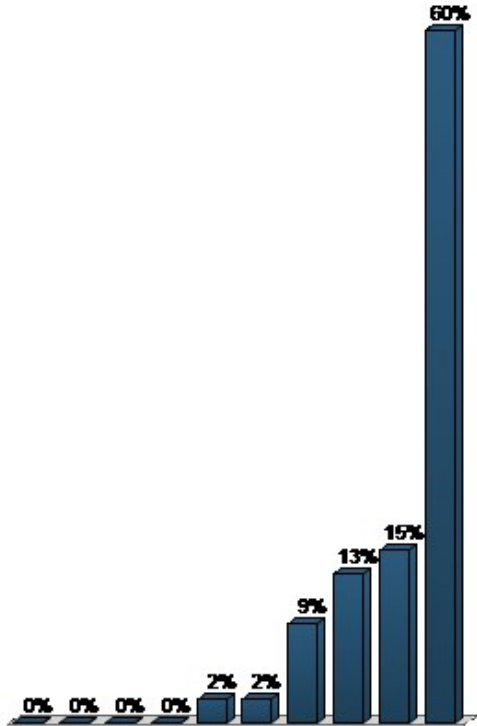
2. At this conference, which interest below do you feel you MOST represent? (Multiple Choice)

Responses		
	Percent	Count
Business	18.18%	8
Military	29.55%	13
Government Entity	29.55%	13
Non-Profit Organization	20.45%	9
Interested Citizen	2.27%	1
Totals	100%	44



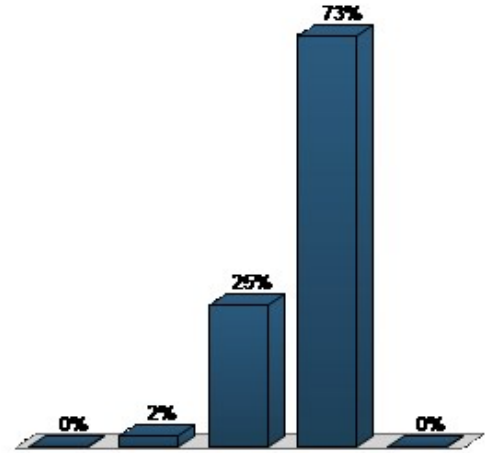
3. On a scale from 1-10 (1 low impact and 10 high impact), what would you rank the economic impact of Fort Leonard Wood to the four county region? (Priority Ranking)

Responses		
	Percent	Weighted Count
Low Impact = 1	0%	0
2	0%	0
3	0%	0
4	0%	0
5	2.13%	10
6	2.13%	10
7	8.51%	40
8	12.77%	60
9	14.89%	70
High Impact = 10	59.57%	280
Totals	100%	470



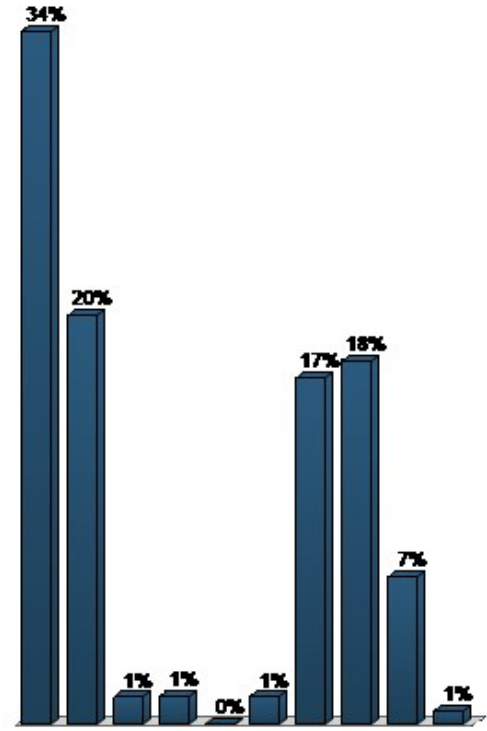
4. Losing 1,000 more uniformed and civilian positions from Fort Leonard Wood would be devastating to the regional economy. (Multiple Choice)

Responses		
	Percent	Count
Strongly Disagree	0%	0
Disagree	2.08%	1
Agree	25%	12
Strongly Agree	72.92%	35
Don't Know	0%	0
Totals	100%	48



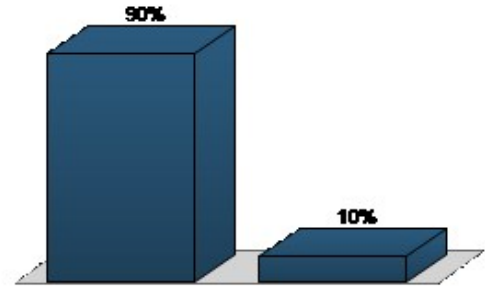
5. If there are reductions in military and civilian personnel at FLW, the impacts to the region would be felt greatest on (Select 3): (Priority Ranking)

Responses		
	Percent	Weighted Count
Housing Market	33.77%	441
Retail Sales	19.91%	260
Social/Public Services	1.3%	17
Health Care	1.38%	18
Agriculture	0%	0
Public Facilities/Infrastructure	1.3%	17
Small Business	16.85%	220
Schools and Higher Education	17.69%	231
Hotels and Lodging	7.2%	94
Public Safety	0.61%	8
Totals	100%	1306



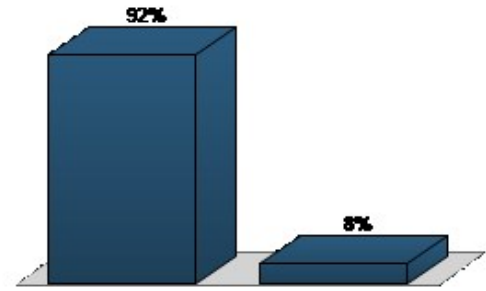
6. I have a good idea of the activities and operations that take place at FLW. (Multiple Choice)

Responses		
	Percent	Count
Yes	89.58%	43
No	10.42%	5
Totals	100%	48



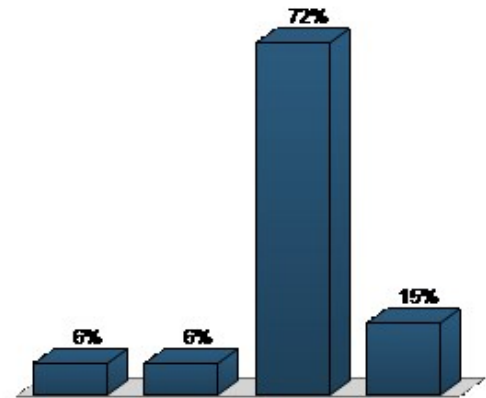
7. Housing mitigation – should the region develop a national campaign to attract military retirees? (Multiple Choice)

Responses		
	Percent	Count
Yes	91.67%	44
No	8.33%	4
Totals	100%	48



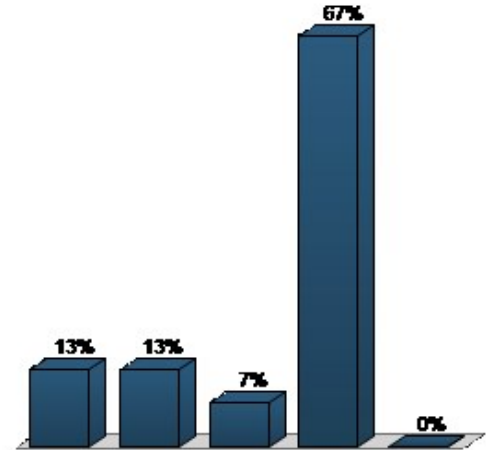
8. Healthcare mitigation – which should the region pursue? (Multiple Choice - Multiple Response)

Responses		
	Percent	Count
New Army hospital	6.38%	3
New Pulaski County hospital	6.38%	3
New joint Civil/Army hospital	72.34%	34
Rely on existing healthcare facilities	14.89%	7
Totals	100%	47



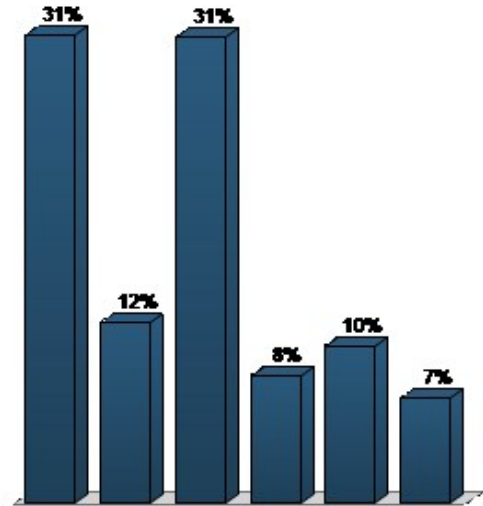
9. Agriculture mitigation – which should the region pursue? (Multiple Choice - Multiple Response)

Responses	
Percent	Count
Increase markets for locally grown/raised food	12.73% 7
Increase local processing of local food products	12.73% 7
Encourage and support vets and others to become farmers/ranchers	7.27% 4
Do all three	67.27% 37
Do none of the above	0% 0
Totals	100% 55



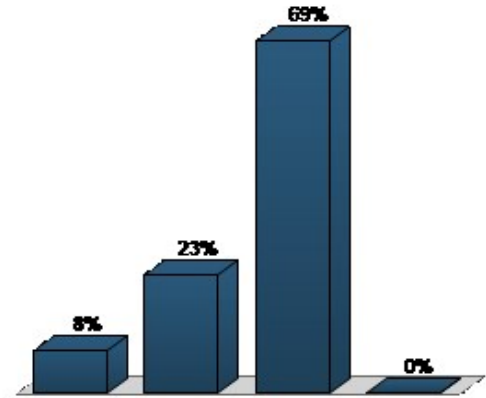
10. Public Facilities/Infrastructure – which should the region focus on? (Priority Ranking)

Responses	
Percent	Weighted Count
Improving roads and highways	31.12% 244
Improving public transportation	11.99% 94
Improving air transportation	30.99% 243
Improving appearance of our cities	8.42% 66
Improving parks and recreation	10.46% 82
Providing more recycling opportunities	7.02% 55
Totals	100% 784



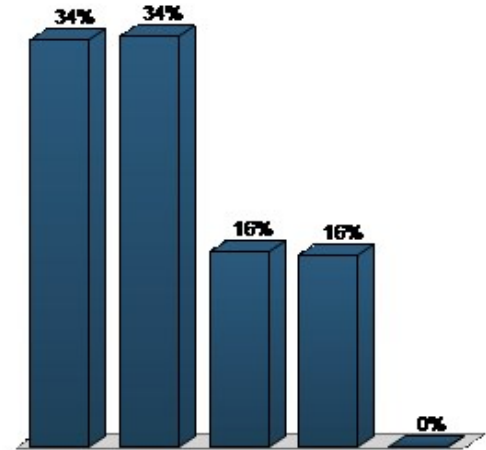
11. Small Business – what should the region focus on? (Priority Ranking)

	Responses	
	Percent	Weighted Count
Training and support for entrepreneurs	8.16%	39
Find funding for new or expanding businesses	23.01%	110
Develop opportunities for new or expanding businesses	68.83%	329
No new actions needed	0%	0
Totals	100%	478



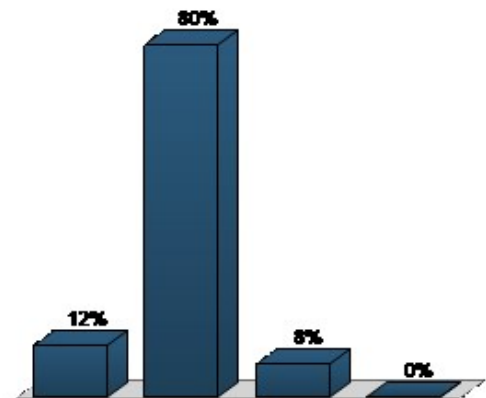
12. Schools and Higher Education – What should the region invest in? (Priority Ranking)

	Responses	
	Percent	Weighted Count
Cooperative work/school programs	33.74%	167
Science, Technology, Engineering and Math (STEM) curriculum	34.14%	169
Adult education programs	16.16%	80
Improve quality of existing programs	15.96%	79
No new actions needed	0%	0
Totals	100%	495



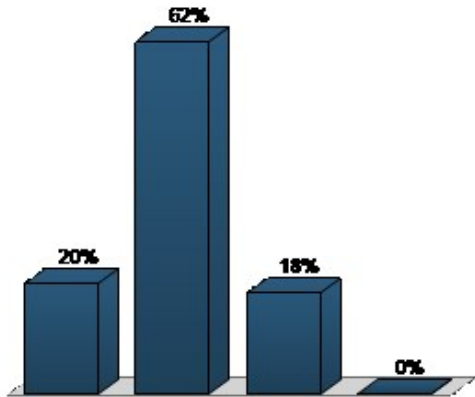
13. Energy Consumption – What should the region invest in? (Priority Ranking)

	Responses	
	Percent	Weighted Count
Campaign to reduce energy consumption	11.9%	59
Local renewable energy	80.44%	399
Pioneer electric vehicles	7.66%	38
No new actions needed	0%	0
Totals	100%	496



14. Workforce – What should the region invest in? (Priority Ranking)

Responses		
	Percent	Weighted Count
Attracting highly skilled workers to the region	19.56%	97
Training existing workers to become more highly skilled workers	62.5%	310
Retaining existing workers through improved benefits	17.94%	89
No new actions needed	0%	0
Totals	100%	496



15. Our state and local officials should do all they can to protect the future of FLW. (Priority Ranking)

Responses		
	Percent	Weighted Count
Strongly Disagree	2.33%	10
Disagree	0%	0
Agree	6.98%	30
Strongly Agree	90.7%	390
Don't Know	0%	0
Totals	100%	430

